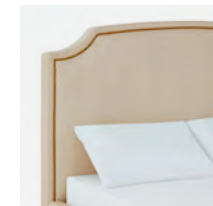




VARIOUS LEG OPTIONS

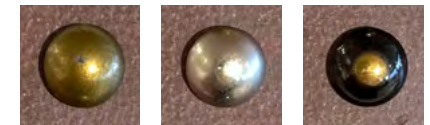


UPHOLSTERED ON ALL SIDES



WELL-TAILORED EDGES

NAILHEAD OPTIONS



**OPTIONS**

Full, Queen, King, California King sizes  
 54" and 64" headboard heights  
 Round tapered wood leg – Espresso, Grey, Walnut  
 Square tapered metal leg – Brushed Nickel  
 Optional nailheads in Brass, Pewter or two-tone  
 Lift bed available only with 1" rotatable leg

**FEATURES**

Fully upholstered headboard (including backside), footboard and rails  
 Available as complete bed or headboard only  
 Wood slats included with complete bed

**MATERIALS**

5/8" plywood slats with no more than 2" gaps in between slats ensures conformance with most warranties. Refer to individual mattress warranty.  
 Matte black steel brackets with countersunk holes and flat head bolts

**COVERS**

Available in all leathers and fabrics and selected accent fabrics.

ADJUSTABLE LIFT BED

**Bed Opening Length**

Full .....77"  
 Queen .....82"  
 King .....82"  
 California King .....86"

**Bed Opening Width**

Full .....55"  
 Queen .....61"  
 King .....77"  
 California King .....73"

**Side Rail Depth**

Full .....3"  
 Queen .....3"  
 King .....3"  
 California King .....3"

**Bed Width**

Full .....61"  
 Queen .....67"  
 King .....83"  
 California King .....79"

**Headboard Height Options**

Complete Bed  
 54", 64"  
 Headboard Only  
 48", 58"

**Leg Height**

6"

**Footboard Depth**

5"

**Ground To Top Of Footboard**

16"

**Ground To Top Of Slat**

14"

**Bed Length**

Full .....87"  
 Queen .....92"  
 King .....92"  
 California King .....96"

**KEY FEATURES**

Adjustable slat system only sold with full bed, cannot be purchased on its own

Dual zone massage on back and feet

Favorite sleep positions can be saved with programmable memory options

Three preset positions (TV, zero gravity, anti-snore)

Four motor articulations – headrest, back, lumbar, feet

Control everything from a convenient app

Features under-bed motion sensor LED lighting with multi-colour options

USB & USBC charging ports

Compatible with all memory foam, latex and hybrid mattresses

Recommended mattress thickness is between 10" – 14"

Dimensions shown as Width x Depth x Height.

Dimensions are correct at the time of printing and are subject to change without notice. Actual measurements for each item may vary from what is shown here.

Please allow up to a +/- 1 inch difference. Availability may vary by region.